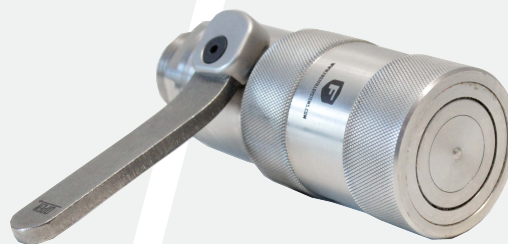




Fuelhawk Equipment Ltd. is focused on bringing quality products to the mining and heavy equipment industry. We are the authorized distributor for Fast Fill Systems, the industry experts in dispense couplers. Providing bulk DEF dispensing products for use on OEM equipment, the Fast Fill nozzle and dry-break quick connect couplers ensure rugged, reliable and simplistic functioning.



3/4" DEF Couplers

Fast Fill offers a wide variety of couplings for DEF products. All couplings are manufactured with high quality materials for your industrial use DEF applications.



DER220
DEF Receiver

220 Series Dry-Break Quick Connect

- 316 Stainless Steel Material
- Viton Seals
- 3/4" Flat faced, dry break design nozzle & receiver
- 1" Male BSPP Threads
- Nozzle must be coupled to the receiver before the handle can be moved



**FAST FILL
SYSTEMS**
AUTHORIZED DISTRIBUTOR

Weight

Receiver: 1.07lbs / .48kg

Nozzle: 4.01lbs / 1.81kg

Max Flow Rate: 60LPM



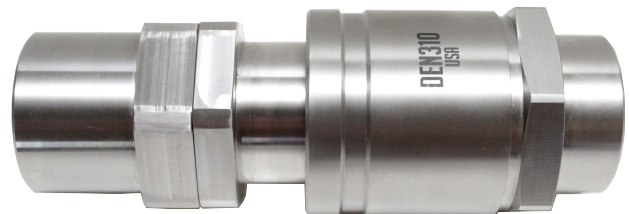
DEN220
DEF Nozzle



1.5" DEF Couplers



DER310
DEF Receiver 1-1/2"



310 Series Dry-Break Quick Connect

- Dry-Break Quick Connect
- 316 Stainless Steel Material
- Viton Seals
- 1-1/2" DEF Male Dry-Break quick connect w/Cap
- 1-1/2" Female BSPP Threads

 **FAST FILL
SYSTEMS**
AUTHORIZED DISTRIBUTOR

Weight

Receiver: 2.8lbs / 1.3kg

Nozzle: 3.7lbs / 1.7kg

Max Flow Rate: 94LPM



DEN310
DEF Nozzle 1-1/2"

FUELHAWK EQUIPMENT LTD.

59412-RR270, RR#1 | Westlock, AB | T7P 2N9

Toll Free (877) 466-4626 Local (780) 446-4626

info@fuelhawk.ca www.fuelhawk.ca

